

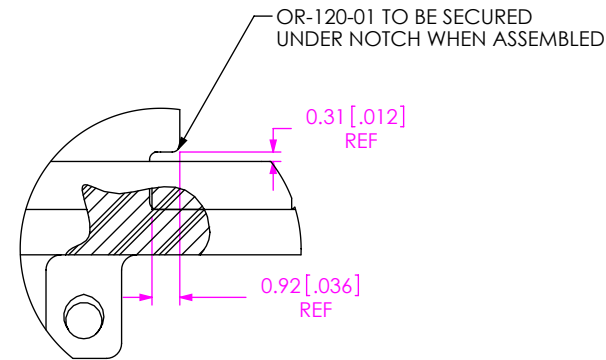
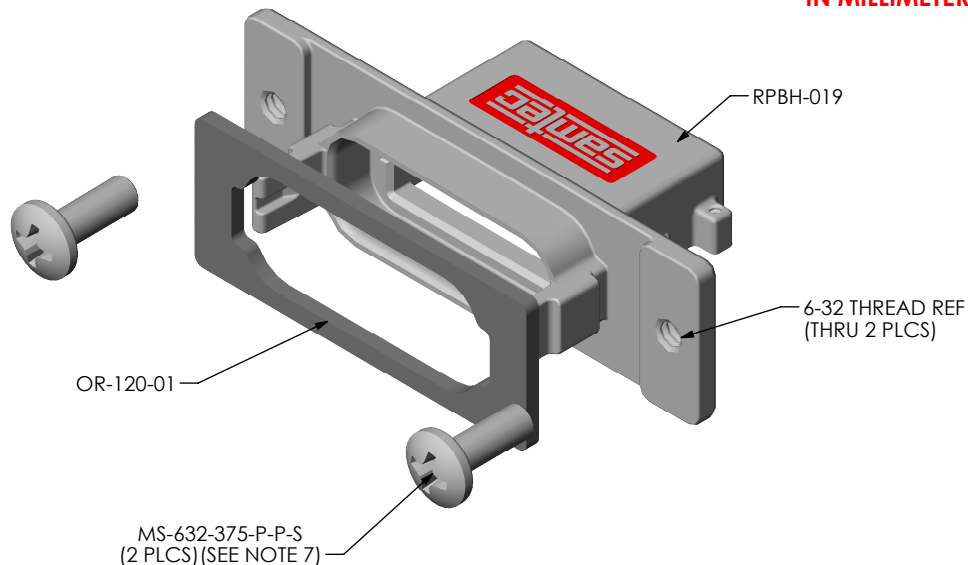
DO NOT SCALE FROM THIS PRINT

DESIGNED & DIMENSIONED IN MILLIMETERS [INCHES]

RPBH-XXX-01

No. OF POSITIONS
-019 (PER ROW)

STYLE
-01: RIGHT ANGLE



DETAIL 'A'
SCALE 4:1

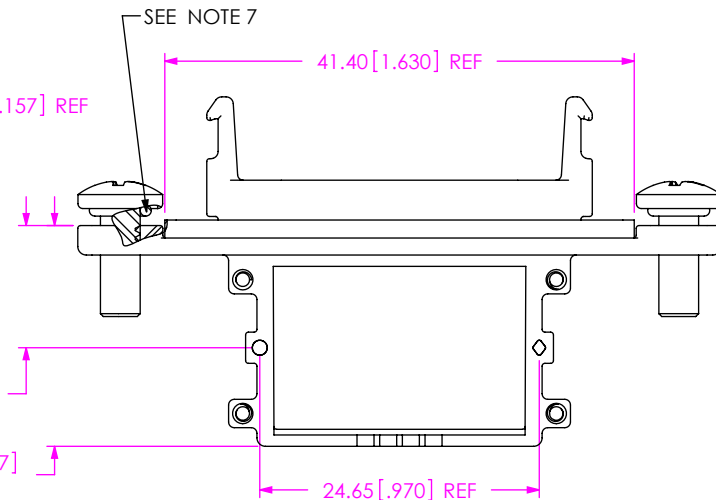
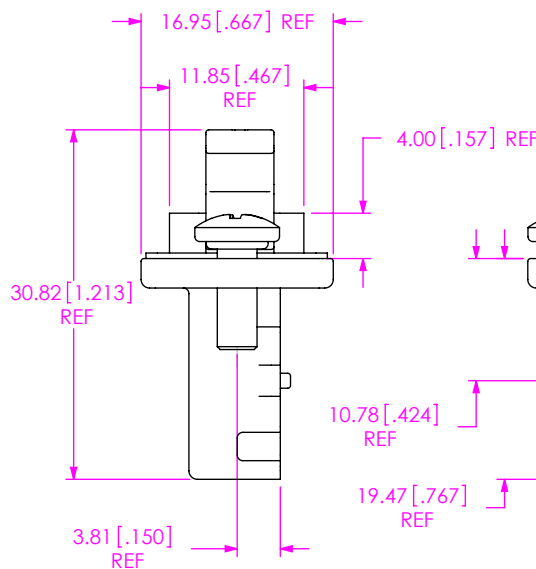
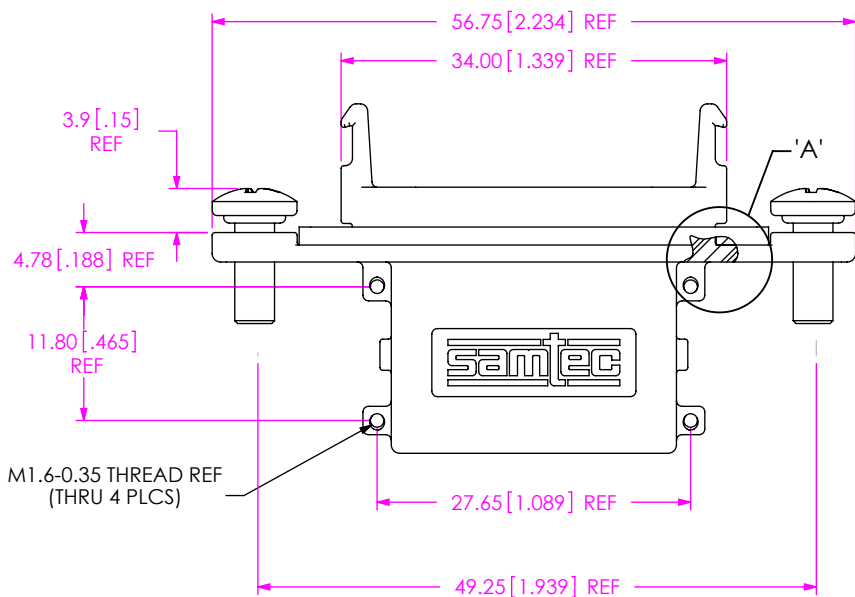


FIG 1
RPBH-019-01 SHOWN

NOTES:

1. $\text{\textcircled{C}}$ REPRESENTS A CRITICAL DIMENSION.
2. BURR ALLOWANCE: 0.038[.0015] MAX.
3. MINIMUM PUSHOUT FORCE: 4.4N[1.00 LB].
4. MAXIMUM ALLOWABLE BOW: 0.05[.002] MM/MM AFTER ASSEMBLY.
5. PANEL THICKNESS: 0.76[.030] - 3.96[.156]. RECOMMENDED PANEL CUT OUT ON SHEET 2.
6. ALL PARTS MUST BE PACKAGED IN TUBES.
7. SEAL O-RING IS INCLUDED IN THE MS-632-375-P-P-S.
8. FOR RECOMMENDED PCB LAYOUT REFER TO ERIB-XXX-X-D-RA-FOOTPRINT.
9. REQUIRED TORQUE ON MS-632-375-P-P-S: 50 IN-OZ.
10. FOR APPLICATION INFORMATION REFERENCE THE RCH APPLICATION PRINT.

UNLESS OTHERWISE SPECIFIED,
DIMENSIONS ARE IN MILLIMETERS.
TOLERANCES ARE:
DECIMALS ANGLES
X.X: ± 0.3 [.01] 2°
X.XX: ± 0.13 [.005]
X.XXX: ± 0.051 [.0020]

PROPRIETARY NOTE

THIS DOCUMENT CONTAINS INFORMATION CONFIDENTIAL AND PROPRIETARY TO SAMTEC, INC. AND SHALL NOT BE REPRODUCED OR TRANSFERRED TO OTHER DOCUMENTS OR DISCLOSED TO OTHERS OR USED FOR ANY PURPOSE OTHER THAN THAT WHICH IT WAS OBTAINED WITHOUT THE EXPRESSED WRITTEN CONSENT OF SAMTEC, INC.

MATERIAL: DO NOT SCALE DRAWING
DIECAST CAGE: ZINC ALLOY
SCREW: STAINLESS STEEL
SEAL: SILICONE

SHEET SCALE: 1:5:1



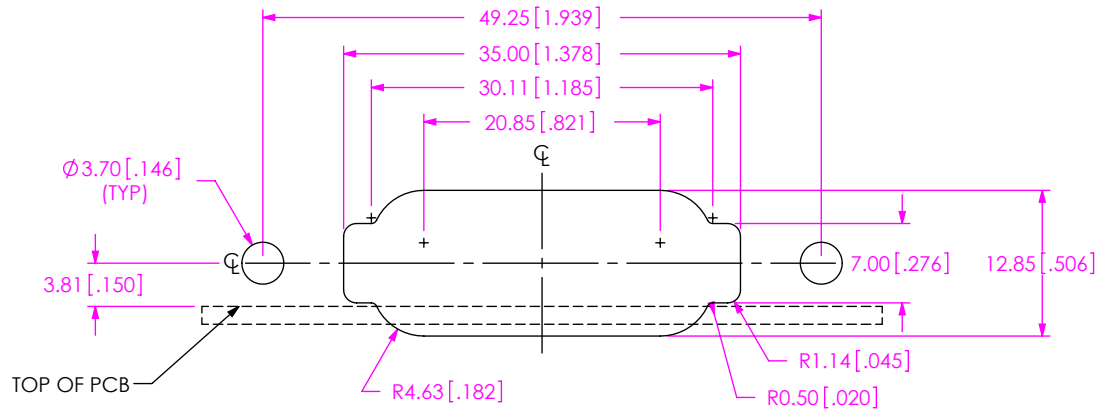
520 PARK EAST BLVD., NEW ALBANY, IN 47150
PHONE: 812-944-6733 FAX: 812-948-5047
e-Mail info@SAMTEC.com code 53322

DESCRIPTION:
SEALED EPLSP RA CAGE ASSEMBLY

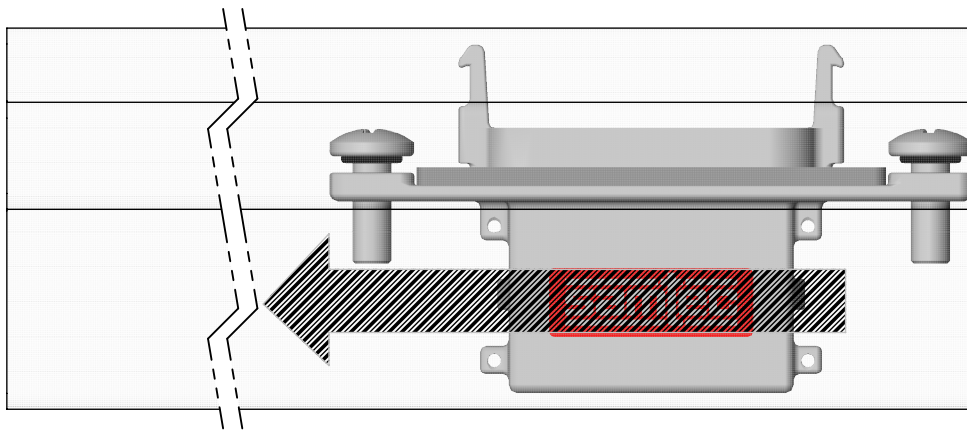
DWG. NO.
RPBH-XXX-01

BY: D.SCHMELZ 07/19/2010 SHEET 1 OF 2

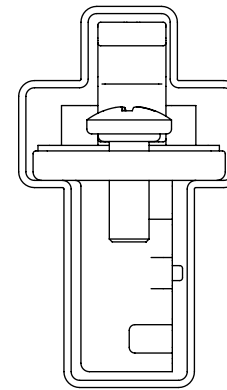
RECOMMENDED PANEL CUT OUT
(SEE NOTES 5 & 8)



PACKAGING VIEW



[PARTS TO HAVE POSITION #1 LOADED IN SAME DIRECTION AS ARROW ON TUBE]



TUBE: PT-RPBH001
PLUG: TP-31

PROPRIETARY NOTE

THIS DOCUMENT CONTAINS INFORMATION CONFIDENTIAL AND PROPRIETARY TO SAMTEC, INC. AND SHALL NOT BE REPRODUCED OR TRANSFERRED TO OTHER DOCUMENTS OR DISCLOSED TO OTHERS OR USED FOR ANY PURPOSE OTHER THAN THAT WHICH IT WAS OBTAINED WITHOUT THE EXPRESSED WRITTEN CONSENT OF SAMTEC, INC.

DO NOT SCALE DRAWING

SHEET SCALE: 1.5:1



520 PARK EAST BLVD, NEW ALBANY, IN 47150
PHONE: 812-944-6733 FAX: 812-948-5047
e-Mail info@SAMTEC.com code 55322

DESCRIPTION:
SEALED EPLSP RA CAGE ASSEMBLY

DWG. NO.
RPBH-XXX-01

BY: D.SCHMELZ 07/19/2010 SHEET 2 OF 2