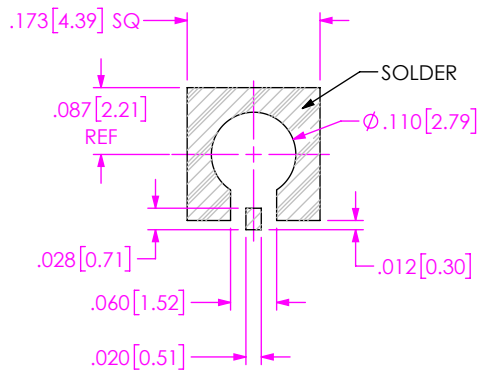


DO NOT SCALE FROM THIS PRINT



RECOMMENDED PCB LAYOUT

DESIGNED & DIMENSIONED IN INCHES[MILLIMETERS]

SMPM-PF-P-EE-ST-SM-2

GENDER
-PF: PLUG FULL DETENT

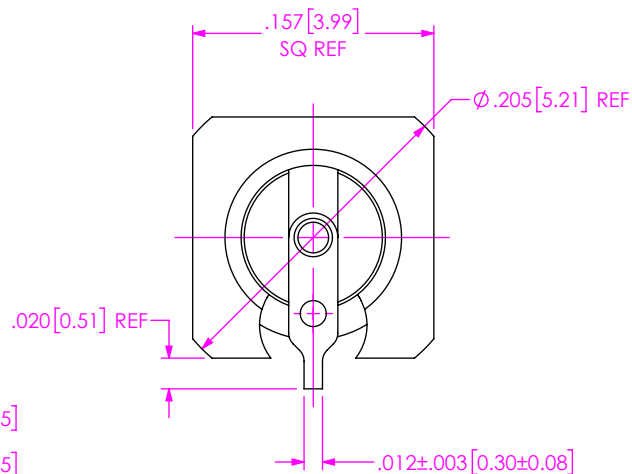
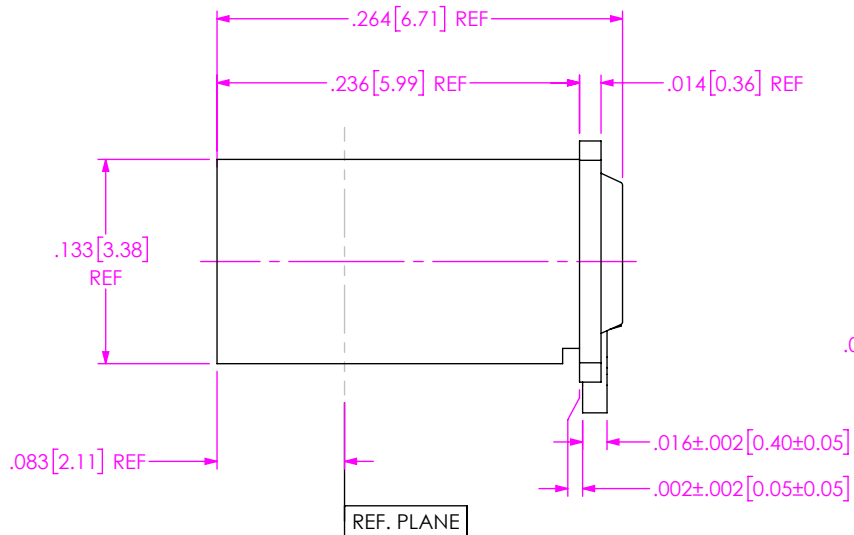
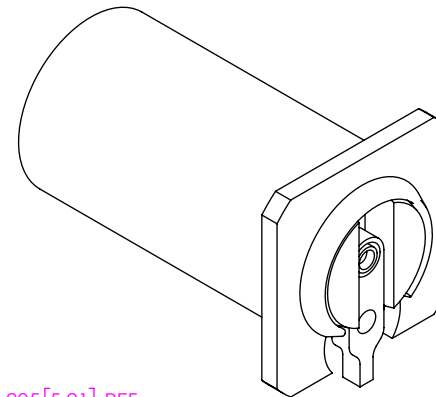
TYPE
-P: PCB

FINISH
-EE: 50μ" EXTRA HEAVY GOLD CENTER CONTACT, 50μ" EXTRA HEAVY GOLD OUTER BODY

OPTION
-1

TERMINATION
-SM: SURFACE MOUNT

ORIENTATION
-ST: STRAIGHT



NOTES:

- MATERIAL:
BODY & CONTACT: BRASS ALLOY 360
CONTACT TAB: BRASS ALLOY 260
INSULATOR: TEFLON FLUOROCARBON
- FINISH:
BODY, CONTACT TAB & CONTACT: GOLD OVER NICKEL PLATE,
50 μIN MIN GOLD OVER 50 μIN MIN NICKEL.
- PCI P/N: 3817.

UNLESS OTHERWISE SPECIFIED, DIMENSIONS ARE IN INCHES.

TOLERANCES ARE:

DECIMALS ANGLES
.XX: ±.01 [0.3] 1°
.XXX: ±.005 [0.13]
.XXXX: ±.0005 [0.013]

PROPRIETARY NOTE

THIS DOCUMENT CONTAINS CONFIDENTIAL AND PROPRIETARY INFORMATION AND ALL DESIGN, MANUFACTURING, REPRODUCTION, USE, PATENT RIGHTS AND SALES RIGHTS ARE EXPRESSLY RESERVED BY SAMTEC, INC. THIS DOCUMENT SHALL NOT BE DISCLOSED, IN WHOLE OR PART, TO ANY UNAUTHORIZED PERSON OR ENTITY NOR REPRODUCED, TRANSFERRED OR INCORPORATED IN ANY OTHER PROJECT IN ANY MANNER WITHOUT THE EXPRESS WRITTEN CONSENT OF SAMTEC, INC.



520 PARK EAST BLVD., NEW ALBANY, IN 47150
PHONE: 812-944-6733 FAX: 812-948-5047
e-Mail info@SAMTEC.com code 55322

DO NOT SCALE DRAWING

SHEET SCALE: 4:1

DESCRIPTION:
SMPM PIN, FULL DETENT, PCB SURFACE MOUNT

DWG. NO. SMPM-PF-P-EE-ST-SM-2

BY: EVE L 10/13/2020 SHEET 1 OF 1