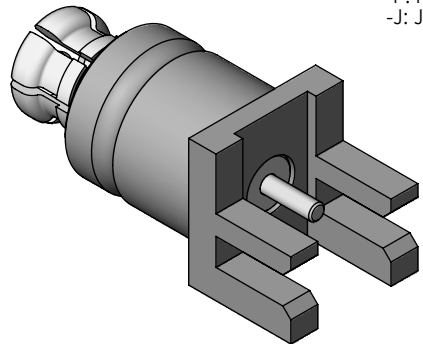


THIS PRODUCT MANUFACTURED WITH LEAD-FREE PROCESSING

DESIGNED & DIMENSIONED IN MILLIMETERS [INCHES]

DO NOT SCALE FROM THIS PRINT

TABLE 1		
ITEM	COMPONENT	-GF
1	SHELL	AFI-P-P-F-ST-EM1-SHL
2	BODY	AFI-P-P-F-ST-EM1-BDY
3	INSULATOR	AFI-P-P-ST-EM1-INS
4	SOCKET	AFI-P-P-G-ST-EM1-SKT
5	BULLET	AFI-P-B-HG-ST-0914M



AFI-X-P-XX-ST-EM1

GENDER
-P: PLUG
-J: JACK (SEE FIG 2, SHT 2)

TERMINATION
-EMT: EDGE MOUNT

ORIENTATION
-ST: STRAIGHT

PLATING SPECIFICATION
-GF: 10µ" GOLD CENTER CONTACT, (SEE TABLE 1, ITEM 4)
5µ" GOLD OUTER CONTACT (SEE TABLE 1, ITEM 1 & 2) (SEE TABLE 1)

TYPE
-P: PCB

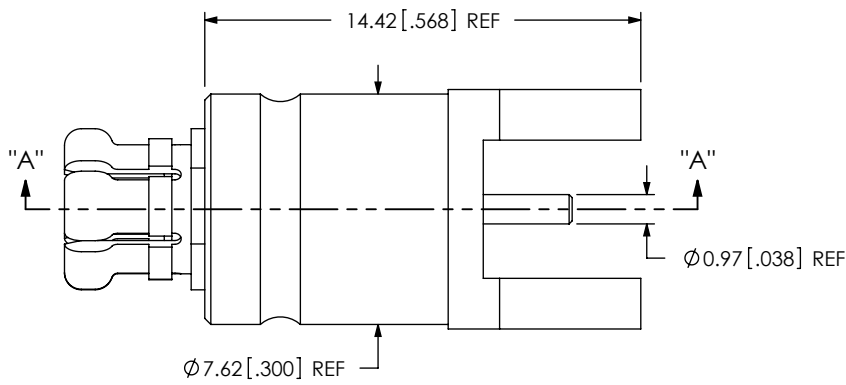
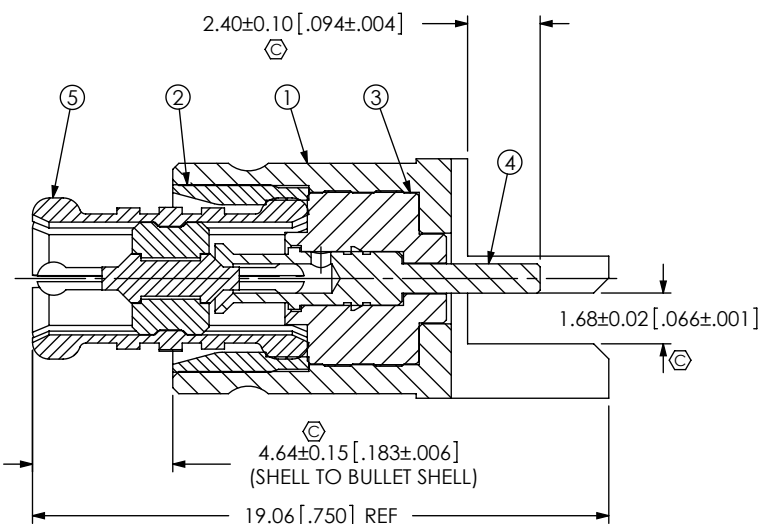
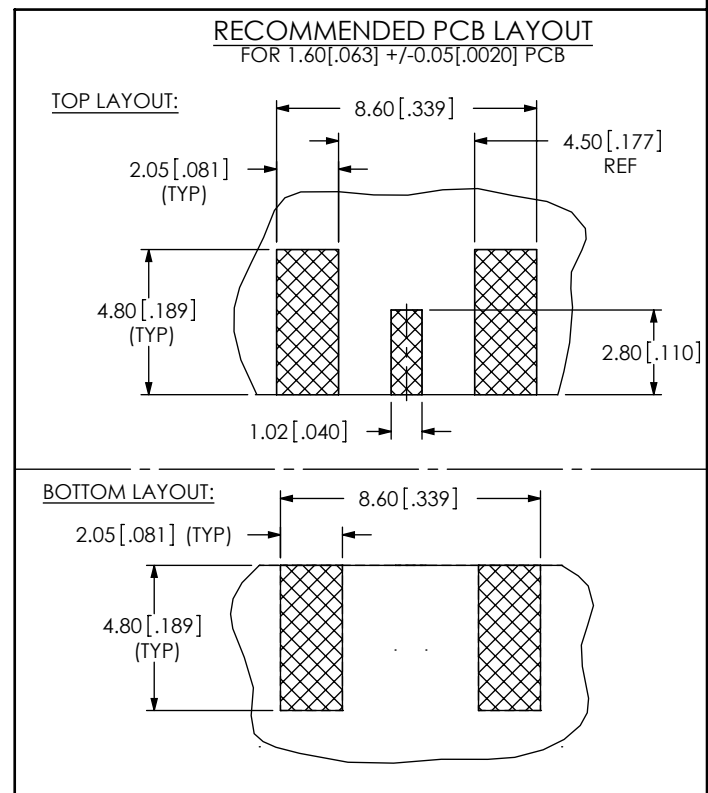
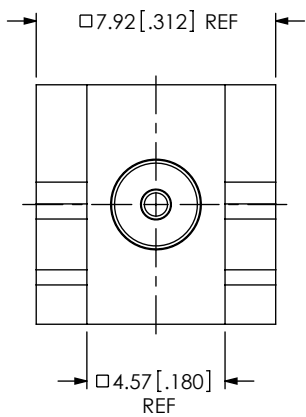


FIG 1
AFI-P-P-XX-ST-EM1 SHOWN



SECTION "A"- "A"



NOTES:

- ⊕ REPRESENTS A CRITICAL DIMENSION.
- PRODUCT TO BE PACKAGED PER PACKING STANDARD CO-HD-WI-3040-M.
TRAY: TY-SMA001-1
COVER: TY-SMA001-2
100 PARTS PER TRAY (1 PART PER POCKET)

UNLESS OTHERWISE SPECIFIED, DIMENSIONS ARE IN MILLIMETERS. TOLERANCES ARE: DECIMALS ANGLES X.X: ±0.3 [.01] 5° X.XX: ±0.13 [.005] X.XXX: ±0.051 [.0020]	PROPRIETARY NOTE THIS DOCUMENT CONTAINS INFORMATION CONFIDENTIAL AND PROPRIETARY TO SAMTEC, INC. AND SHALL NOT BE REPRODUCED OR TRANSFERRED TO OTHER DOCUMENTS OR DISCLOSED TO OTHERS OR USED FOR ANY PURPOSE OTHER THAN THAT WHICH IT WAS OBTAINED WITHOUT THE EXPRESSED WRITTEN CONSENT OF SAMTEC, INC.		
		520 PARK EAST BLVD, NEW ALBANY, IN 47150 PHONE: 812-944-6733 FAX: 812-948-5047 e-Mail: info@SAMTEC.com code 55322	
MATERIAL: DO NOT SCALE DRAWING	SHEET SCALE: 4:1	DESCRIPTION: AFI PLUG RECEPTACLE PCB EDGE MOUNT, ASSEMBLY	
BULLET SHELL, BULLET PIN: BeCu SHELL, BODY, SOCKET: BRASS INSULATORS: PTFE		DWG. NO. AFI-X-P-XX-ST-EM1	
		BY: EMMA CHEN 05/31/2012 SHEET 1 OF 2	

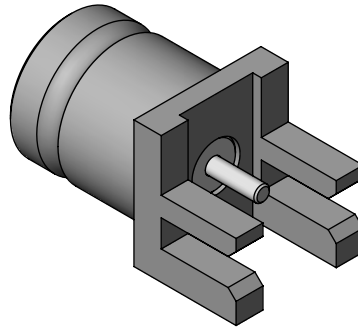
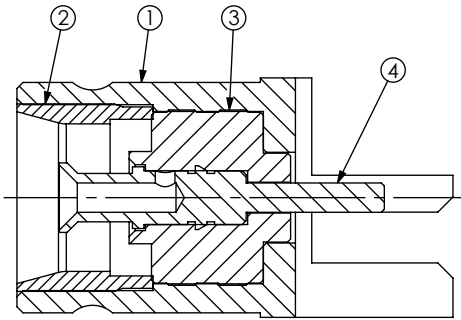
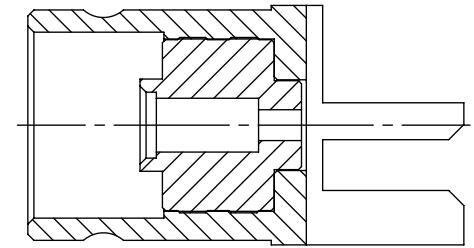
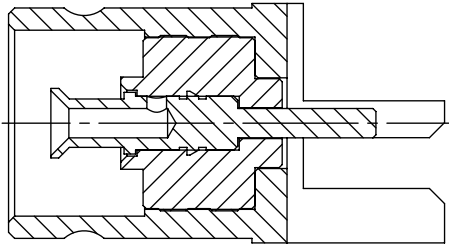


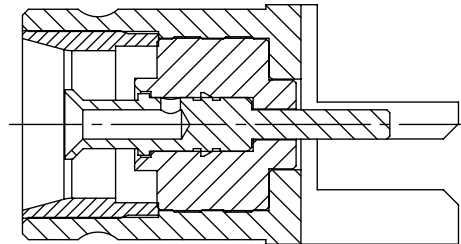
FIG 2
AFJ-J-P-XX-ST-EM1 SHOWN
(JACK OPTION DOES NOT INCLUDE BULLET)
(DIFFERENT AS SHOWN, OTHERWISE SAME AS FIG 1)



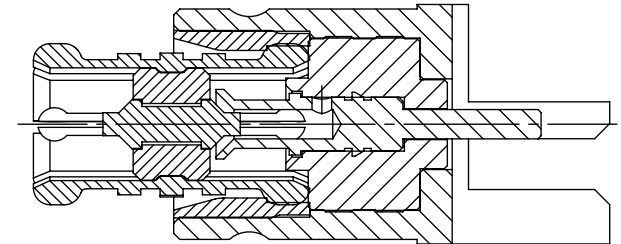
IN-PROCESS 1
INSERT INSULATOR



IN-PROCESS 2
INSERT SOCKET



IN-PROCESS 3
INSERT BODY



IN-PROCESS 4
INSERT BULLET

F:\DWG\MISC\MKTG\AFI-X-P-XX-ST-EM1-MKT.SLDDRW

PROPRIETARY NOTE
THIS DOCUMENT CONTAINS INFORMATION
CONFIDENTIAL AND PROPRIETARY TO
SAMTEC, INC. AND SHALL NOT BE REPRODUCED
OR TRANSFERRED TO OTHER DOCUMENTS OR
DISCLOSED TO OTHERS OR USED FOR ANY
PURPOSE OTHER THAN THAT WHICH IT WAS
OBTAINED WITHOUT THE EXPRESSED WRITTEN
CONSENT OF SAMTEC, INC.

DO NOT SCALE DRAWING

SHEET SCALE: 4:1



520 PARK EAST BLVD, NEW ALBANY, IN 47150
PHONE: 812-944-6733 FAX: 812-948-5047
e-Mail info@SAMTEC.com code 55322

DESCRIPTION:
AFI PLUG RECEPTACLE PCB EDGE MOUNT, ASSEMBLY

DWG. NO. **AFI-X-P-XX-ST-EM1**

BY: EMMA CHEN 05/31/2012 SHEET 2 OF 2