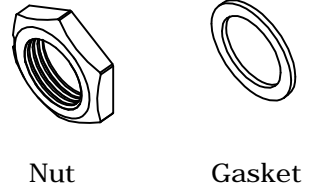


REV.	DESCRIPTION	DRAWN	DATE
1	INITIAL RELEASE	FROS	2020/06/10

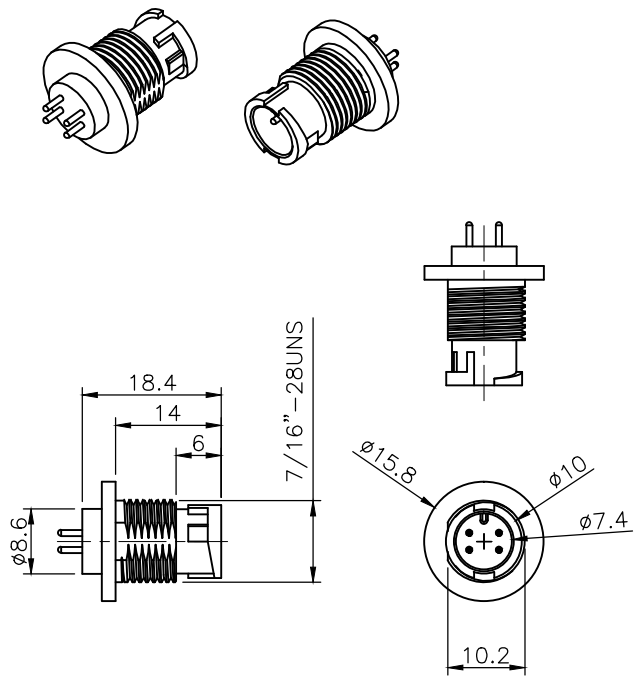
**SPECIFICATION:**

1. Current Rating: 2A/ 5A per pin (see P2. table)
2. Contact Resistance: 10mΩ
3. Insulation Resistance: 100MΩ
4. Dielectric Withstanding Voltage: 500VAC
5. Durability: 1000 Cycle
6. Operating temperature range: -40°C~+85°C
7. Storage temperature range: -40°C~+85°C
8. Water Proof: IP67

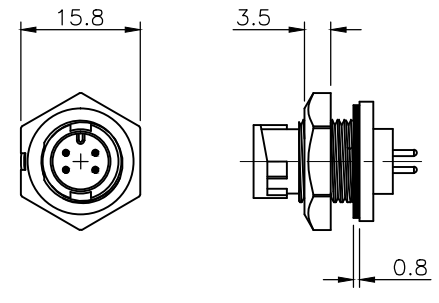


Nut Gasket

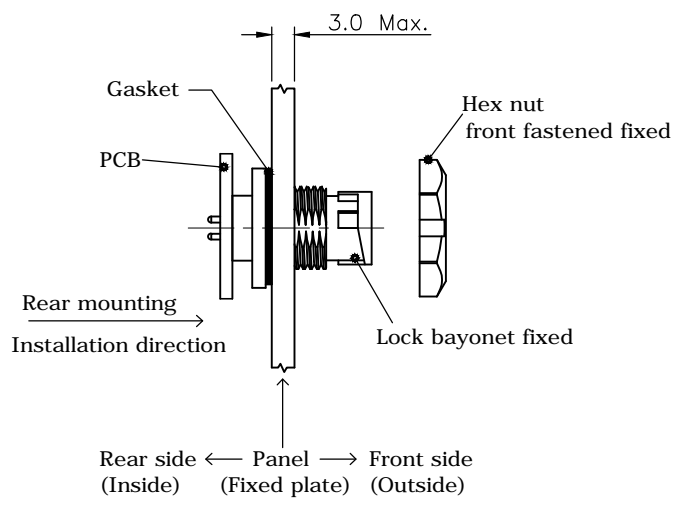
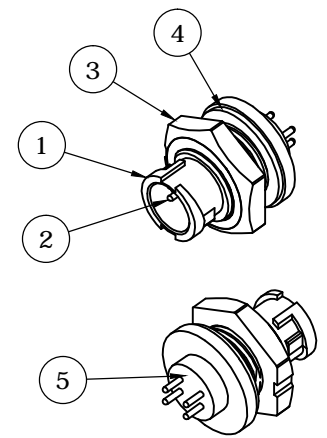
Accessories



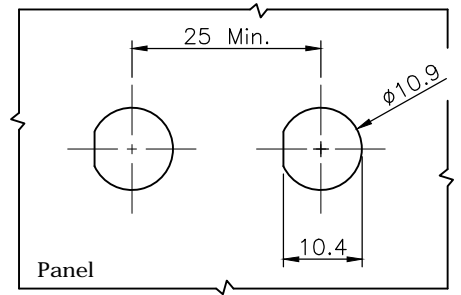
Body




Assembly View



Rear side ← Panel → Front side  
(Inside) (Fixed plate) (Outside)

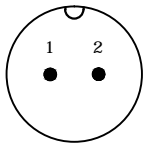
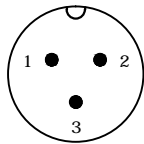


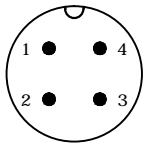
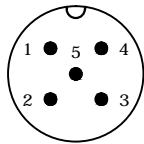
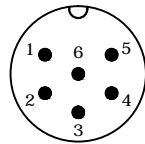
Recommend Panel Cut

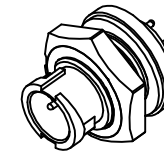
5	GLUE	EPOXY	
4	GASKET	Silicone, Gray	
3	HEX NUT	PA66, UL94V-0, Black	
2	CONTACT	Brass, 1u' Min. Gold Plating over Nickel	
1	HOUSING	PA66, UL94V-0, Black	
NO. PART NAME		DESCRIPTION	
UNLESS OTHERWISE SPECIFIED TOLERANCE			
UNIT:	DECIMAL	LINEAR	ANGLES
	mm	X. ±0.50	X.X ±3°
		X.XX ±0.25	X.XX ±1°
DRAWN Fros 2020/06/10			 www.attend.com.tw
DRAWN NAME: A Size Connector, Panel Fixed Front Fastened Bayonet, M Skt M DIP Pin			
CHECKED Tim 2020/06/10			PRODUCT NO. see page 2 table
APPROVED Ken 2020/06/10			FILE NAME 227A-DMMO_B_1
SCALE 1/1		SHEET 1/3	SIZE A4

REV.	DESCRIPTION	DRAWN	DATE
	SEE SHEET ONE		


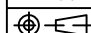
TABLE: Pin Count/ Pin Assignment/ Current Rating/ Part Number

Part Number	227A-02M02	227A-03M02
Pin Assignment		
Pin Count	2Pin	3Pin
Current Rating	5A	5A

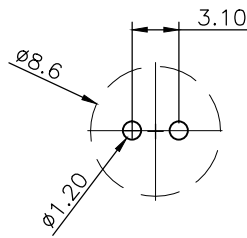
Part Number	227A-04M02	227A-05M02	227A-06M02
Pin Assignment			
Pin Count	4Pin	5Pin	6Pin
Current Rating	2A	2A	2A



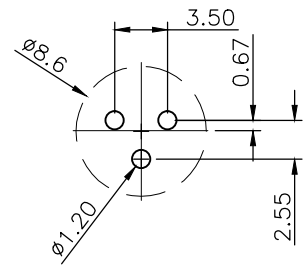
Drawing Number: 227A-DMM0  
Description: A size connector, panel fixed front fastened bayonet lock, male Socket male pin, DIP

UNLESS OTHERWISE SPECIFIED TOLERANCE				 www.attend.com.tw					
UNIT:	DECIMAL	LINEAR	ANGLES			DRAWN NAME: A Size Connector, Panel Fixed Front Fastened Bayonet, M Skt M DIP Pin			
mm	X.	±0.50	±5°					PRODUCT NO. see table	
	X.X	±0.25	±3°						
	X.XX	±0.12	±1°						
DRAWN	Fros	2020/06/10	FILE NAME 227A-DMM0_B_1						
CHECKED	Tim	2020/06/10							
APPROVED	Ken	2020/06/10							
	SCALE 1/1	SHEET 2/3	SIZE A4						

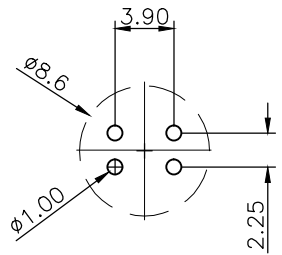
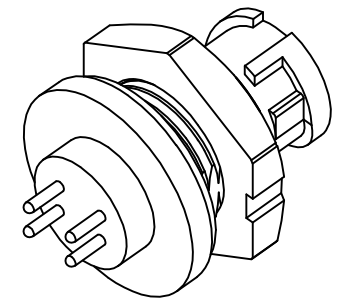
REV.	DESCRIPTION	DRAWN	DATE
	SEE SHEET ONE		



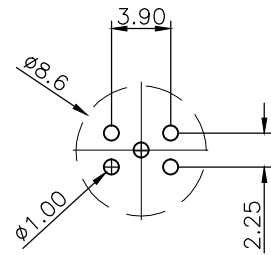
2P/5A



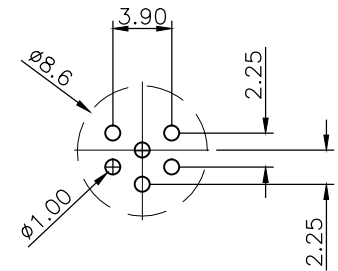
3P/5A



4P/2A


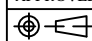


5P/2A

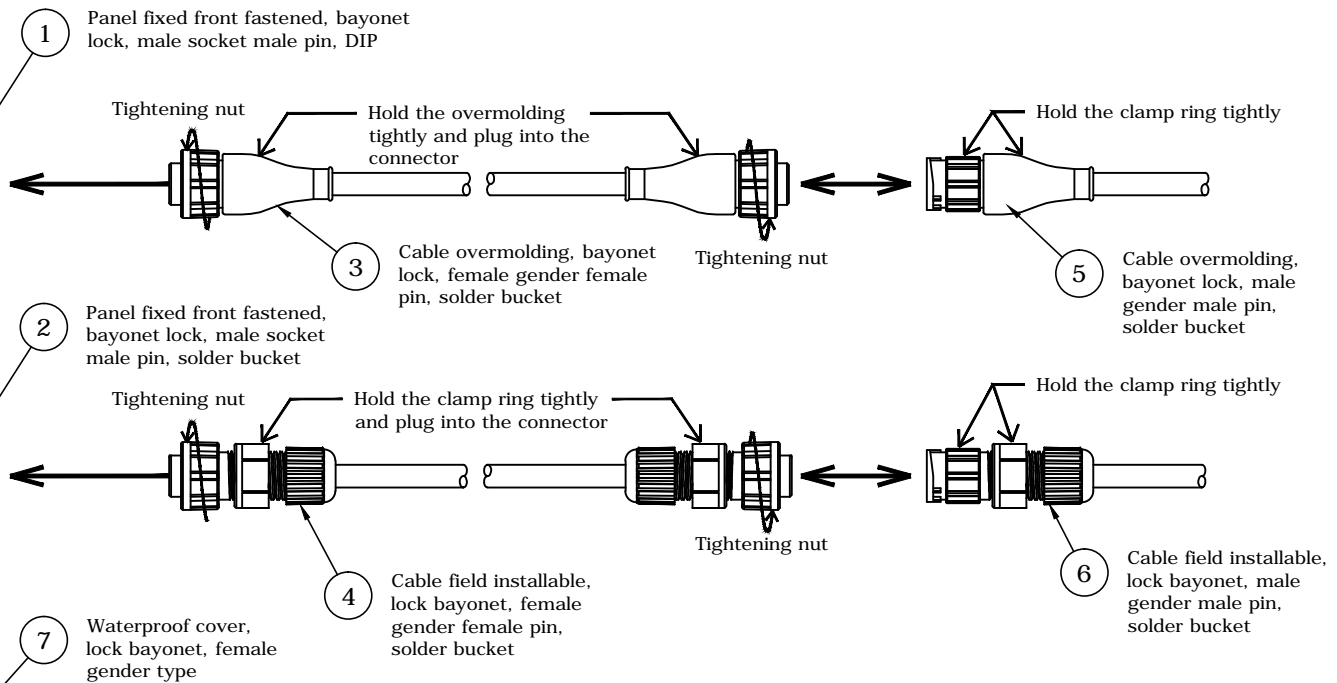
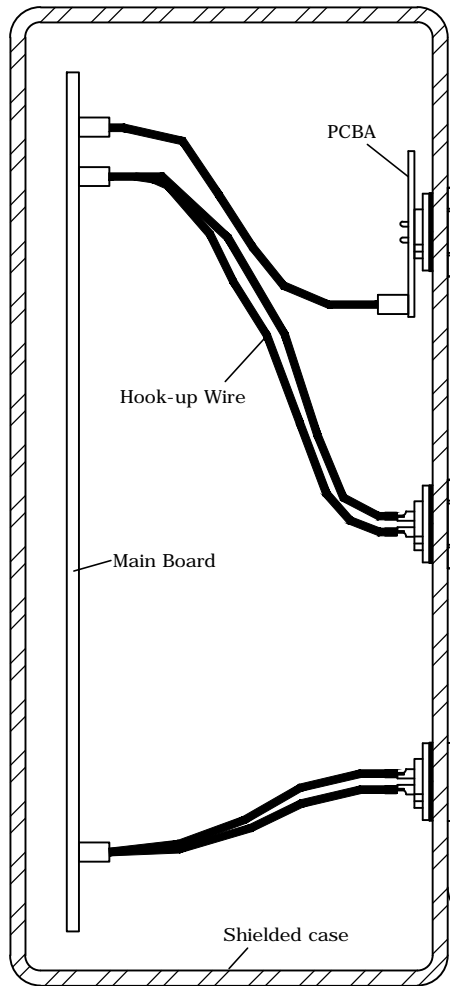


6P/2A

**RECOMMENDED LAYOUT (TOP VIEW)**  
**GENERAL TOLERANCE:  $\pm 0.05\text{mm}$**

UNLESS OTHERWISE SPECIFIED TOLERANCE				 www.attend.com.tw	
UNIT:	DECIMAL	LINEAR	ANGLES		
mm	X.	$\pm 0.50$	$\pm 5^\circ$		
	X.X	$\pm 0.25$	$\pm 3^\circ$		
	X.XX	$\pm 0.12$	$\pm 1^\circ$		
DRAWN	Fros	2020/06/10	DRAWN NAME:		
CHECKED	Tim	2020/06/10	A Size Connector, Panel Fixed Front Fastened Bayonet, M Skt M DIP Pin		
APPROVED	Ken	2020/06/10	PRODUCT NO.	see table	
	SCALE	SHEET	SIZE	FILE NAME	
	2/1	3/3	A4	227A-DMMO_B_1	

REV.	DESCRIPTION	DRAWN	DATE
1	INITIAL RELEASE	FROS	2020/06/10



Application	Ball no.	Drawing Number	Gender		Matchable drawing numbers			
			Conn. type	Pin type	1	2	3	4
Panel Fixed	①	227A-DMMO	Male	Male	227A-MFFO	227A-AFFO	227A-0001	
	②	227A-SMMO			③	④	⑦	
Cable	③	227A-MFFO	Female	Female	227A-DMMO	227A-SMMO	227A-MMMO	227A-AMMO
	④	227A-AFFO			①	②	⑤	⑥
	⑤	227A-MMMO	Male	Male	227A-MFFO	227A-AFFO	227A-0001	
	⑥	227A-AMMO			③	④	⑦	
Accessories	⑦	227A-0001	Female		①	②	⑤	⑥

UNLESS OTHERWISE SPECIFIED TOLERANCE

UNIT:	DECIMAL	LINEAR	ANGLES
mm	X.	±0.50	±5°
	X.X	±0.25	±3°
	X.XX	±0.12	±1°

DRAWN	Fros	2020/06/10
CHECKED	Tim	2020/06/10
APPROVED	Ken	2020/06/10

SCALE	SHEET	SIZE
1/2	1/1	A4

www.attend.com.tw

DRAWN NAME:  
A Size Connector, Application Drawing

PRODUCT NO.

FILE NAME  
227A-Series\_B\_1